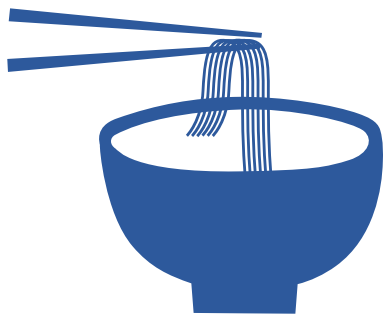
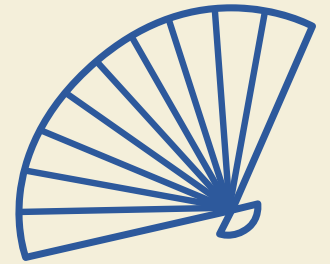
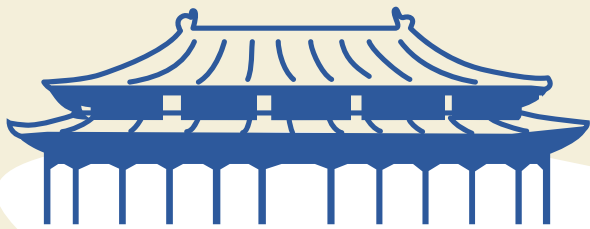


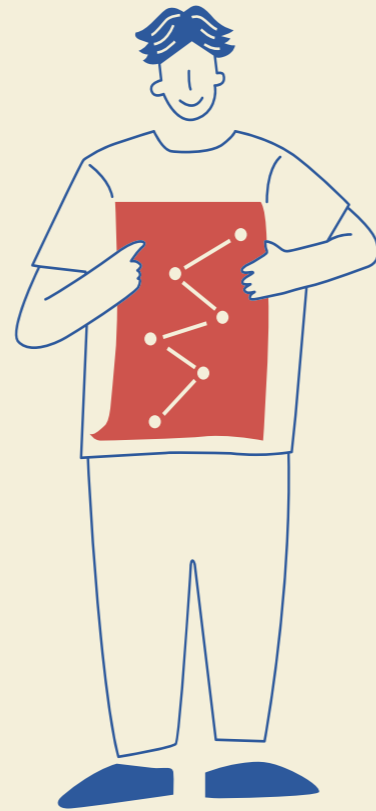
CHINESE WINTER CAMP PROGRAMS

 That's
Mandarin



www.wintercampschina.com

Since 2008, That's Mandarin's Winter Chinese Camp has been delivering a first-class Chinese learning experience to thousands of kids and teens in Beijing and Shanghai.



50000+ students in total

Since the establishment of our school, we've served over 50,000 students on their journey to mastering Chinese, and more students are joining annually.

More than **5000** campers

Since 2008, our Summer and Winter Camps have hosted a total of more than 5000 campers from all over the world.

Over **100** overseas organizations

We have worked with over 100 overseas organizations offering students safe and educational school trips since 2005.

Over **15** years of Chinese Camp

Our first Camp was held in 2008 and has proven a popular choice year on year.



Safety First

The safety of your child is our paramount concern. Rest assured your child is safe with us!



Professional Teachers

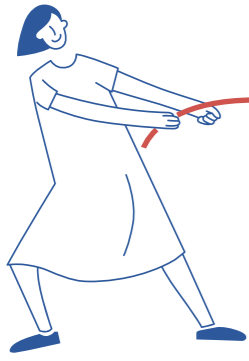
Our talented and enthusiastic teachers are all experienced working with under 18s.



Fun! Fun! Fun!

Our activities are engaging, inspiring and fun, with an emphasis on being educational and, above all, safe!





1

How We Compare to Other Camps



That's Mandarin

At least 1 teacher is in charge of every 6 students.

An average of 6 students per class.

Emphasis on oral fluency through fun games and activities.

Students will play games and complete tasks while on field trips.

Students' learning progress and materials can be accessed via our online learning system.

None. What you see is what you get.

Safety During Excursions

Smaller Group Size

Chinese Lessons

Field Trips

Learning Resources

Hidden Fees

Other Schools

Only 2 teachers are in charge of the whole group (usually 20-30 kids).

An average of 20-30 students per class.

Traditional, textbook-based classes.

Field trips are often organized by a travel agency with no learning activities.

Reports are in paper format and study materials are traditional textbooks.

Books fee, registration fee, handling fee, visa fee.




2022 CHINESE WINTER CAMP PROGRAMS

5 EXCITING OPTIONS TO CHOOSE FROM



In addition to regular Chinese classes and cultural activities, we offer tailor-made camp all year round that is especially suited to each family member's needs and requirements



	CONTENT	SUITABLE FOR	TIME	SCHEDULE	SERVICE PACKAGE	ACCOMMODATION	
CLASSES-ONLY CAMP	Chinese Lessons	Children aged 7-17 whose parents are in/not in China	1pm — 4pm	Mon — Fri			Intensive study of the Chinese language through a wide mix of interactive classes
DAY CAMP	Chinese Lessons + Cultural Activities + Field Trips + Lunch	Children aged 7-17 who are interested in both Chinese language & culture	9am — 4pm	Mon — Fri			Study the Chinese language and culture through cultural activities and field trips
FULL CAMP	Chinese Lessons + Cultural Activities + Field Trips + 3 Meals Per Day + Hotel + Evening & Weekend Activities	Children aged 12 - 17 who are highly motivated to improve their Chinese skills & learn more about Chinese culture	9am — 4pm +24h supervision	Mon — Sun	Airport Pickup & Drop-off	Shared Room	Study Chinese in a conducive learning environment & experience the Chinese culture
HOMESTAY CAMP	Chinese Lessons + Cultural Activities + Field Trips + 3 Meals Per Day + Homestay + Evening & Weekend Activities	Children aged 12-17 who would like to stay with a local family during their study in China	9am — 4pm +24h supervision	Mon — Sun	Airport Pickup & Drop-off	Homestay Family	Stay with a local family and have a close look at Chinese people's daily life
FAMILY CAMP	Day Camp for children & Chinese Program for parents	Children aged 7-17 who would like to study Chinese together with their parents	9am — 4pm (adults tbc)	Mon — Fri			Join your kids for an enjoyable Chinese learning experience

3 Extras



Teen Immersion Program

Our Teen Immersion Program is a Chinese mastery program designed especially for teens. After an intensive study of the Chinese language, students will quickly improve their Chinese language skills and gain confidence in having conversations with local Chinese people.



Online Chinese School for Kids & Teens

Learn Chinese anytime, anywhere you want before and after Winter Camp. We provide high quality online lessons to students from all over the world using our learning platform NihaoCafe.

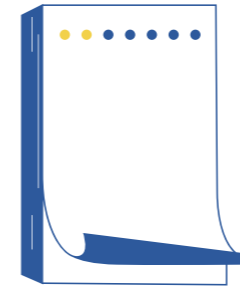


China School Trip

Looking for a school trip organizer to offer your students a unique study-travel experience in China? Overseas educators and schools put their trust in That's Mandarin to organize an enriching Chinese trip for their students. Visit www.chinaschooltrip.com for more information.



4 Sample Schedule of Our Full Camp



Bonus

At 2:50 pm we offer healthy snacks, including fruit, for all campers to enjoy!

	Monday	Tuesday	Wednesday	Thursday	Friday	Saturday	Sunday
9am - 12pm	Calligraphy + Games	Beijing field trip: Capital Museum Shanghai field trip: Science & Technology Museum	Paper cutting + Games	Beijing field trip: Science & Technology Museum Shanghai field trip: China Expo Pavilion	Practice class + Games	Beijing field trip: The Great Wall Shanghai field trip: Sightseeing trip to Xitang	Supervised free time (Socializing with other campers) Long lunch / free time
12pm-1pm	Lunch time with Chinese teachers						
1pm-1:50pm	Topic Chinese classes						
2pm-2:50pm	Cartoon classes						
3pm-3:50pm	Reading & writing classes						
4pm-5pm	Homework						
Evening	Dinner; watching movies; socializing with other campers Accommodation: Hotel shared room						

2022 CHINESE WINTER CAMP PRICING

	CLASSES-ONLY CAMP	DAY CAMP	FULL CAMP	HOMESTAY CAMP	FAMILY CAMP
2 WEEKS	RMB 6000	RMB 12,000	RMB 23,800	RMB 23,800	TBA
4 WEEKS	RMB 12,000	RMB 24,000	RMB 47,600	RMB 47,600	TBA

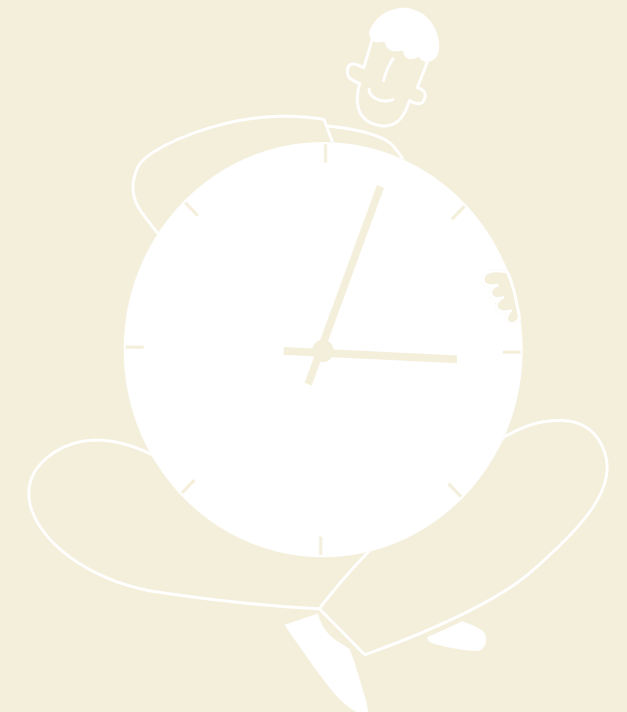


**EARLY BIRD
DISCOUNTS
AVAILABLE**

**CONTACT US
TO LEARN MORE**

2022 WINTER CAMP START DATES

Nov 7 | Nov 21 | Dec 5 | Jan 9 | Jan 23





6 Contact Information

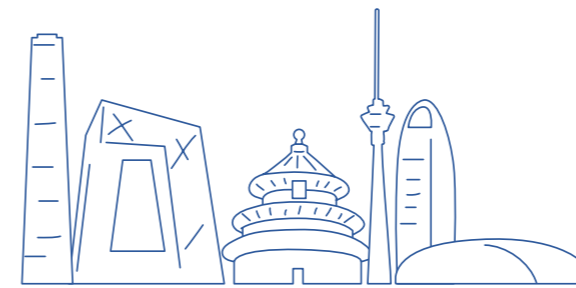
Beijing

+86 10 8448-9799
info@thatsmandarin.com
Xinzhong Street No. 7, Bldg 2, Dongcheng
District, Beijing 100027, China
北京市东城区新中街7号2号楼

Shanghai

+86 21 6095-8317
info.shanghai@thatsmandarin.com
Wuding Road No. 881, Bldg 1, 5/F, Jing'an
District, Shanghai 200040, China
上海市静安区武定路881弄1座5层

www.wintercampschina.com



5 Starting Dates & Program Duration

Our Winter Camp programs generally run from November to January. The minimum duration is 2 weeks and our programs can be extended based on your specific requirements. For more information on dates, please contact us directly.





Contact Us Today